

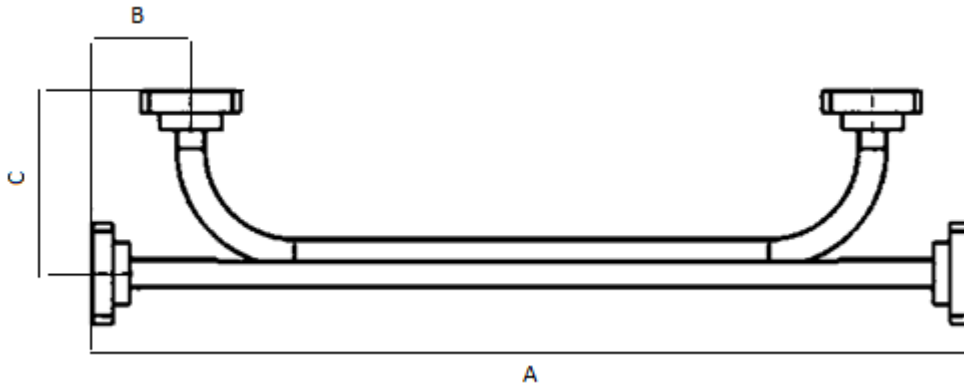


Model Number:
WGB-XX-197056

RF Components

Ku-Band Broadwall Coupler

10.00-15.00 GHz



Specification				
WG Size	WG17 / WR75/ R120			
Coupling	20±2.0 dB	30±2.0 dB	35±2.0 dB	40±2.0 dB
Frequency Range	10 - 15 GHz			
Finish	Brass Flanges Copper WG Black Paint			
Flange Options	UG MIL 53C-007 (US) / UG MIL 53C-007 (UF) UG MIL 59D-010 (UG) / CBR 120 (CB) UBR 120 (UB) / PBR (PB) PDR 120 (PD) / UDR 120 (UD)			
Main Line VSWR / Return Loss (max)	1.05:1 / 32.3	1.05:1 / 32.3	1.05:1 / 32.3	1.05:1 / 32.3
Secondary Arm VSWR / Return Loss (max)	1.1:1 / 25.66	1.1:1 / 25.66	1.1:1 / 25.66	1.1:1 / 25.66
Directivity (min over 75% Bandwidth)	>= 25 dB	>= 25 dB	>= 25 dB	>= 25 dB
Dimensions	A-250mm B-25mm C-65mm			

Model Numbers					
Example: WGB-20-197056-UBPB					
WG	B	20	197056	UB	PB
Waveguide	C-Cross Guide D-Dual Arm B-Broad wall	Coupling Factor	Model Number	Left Hand Flanges	Right Hand Flanges

Broadcast



Marine Oil & Gas



SNG & VSAT



Satellite Teleport

